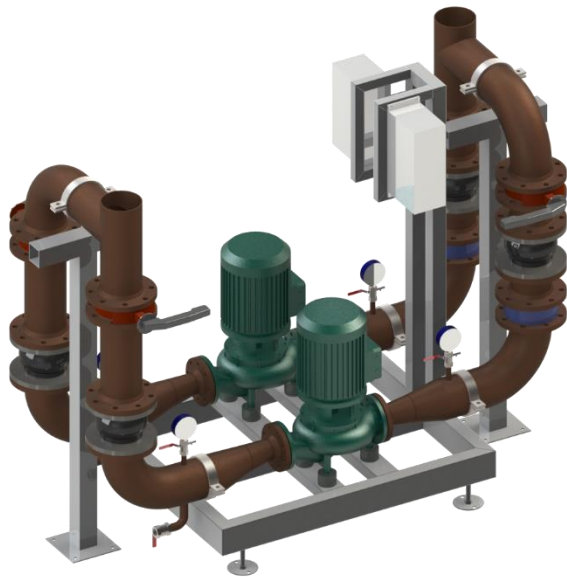
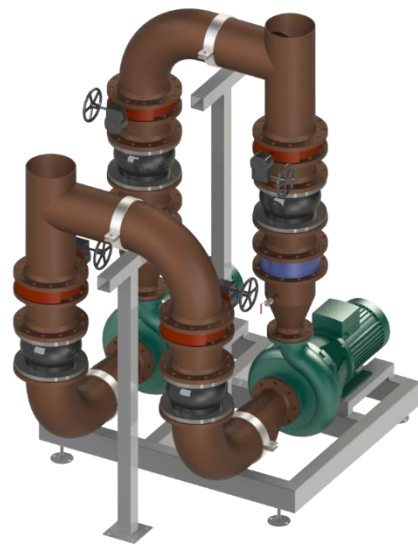


## FlowTek double circulation pumps unit

Circulation pumps flow range 2 – 518 m<sup>3</sup>/h



Example of DP65 – DP300 in-line unit types



Example of DP65 – DP300 angle unit types

### Benefits:

- Compact size for an easy installation and transport.
- Space and time savings during on-site installation.
- Completely mounted on frame with adjustable feet.
- Easy to install and maintain.
- Good access to maintenance components.
- Possibility to choose pump model and range.
- Customization according to the project parameters, pipe sizes and mounting locations.

### Product information:

Prefabricated and ready-to-connect FlowTek circulation pumps unit can be easily adapted to heating or cooling systems. It can be chosen in 2 design versions: with in-line circulation pumps and with angle type circulation pumps. Moreover pipeline steel quality can be select from - black steel P235TR1 and stainless steel AISI316L. FlowTek circulation pumps unit is designed to be floor mounted. All components are fixed to the frame, that provides a robust design. Circulation pumps, pipes with all fittings and all of piping components arrives as one module, so it ensures space and time savings for on-site installation. All piping components are equipped with high quality and world recognized brands, that ensures high performance during operation time. FlowTek double circulation pumps unit comes as standart with Grundfos (alt. Wilo) circulation pumps. The module is designed as standart product and is available in different performance ranges, but can be easily adjusted according to the project parameters, such as circulation pumps flow and head rates, pipeline sizes, pipe mounting locations and other desired design versions.

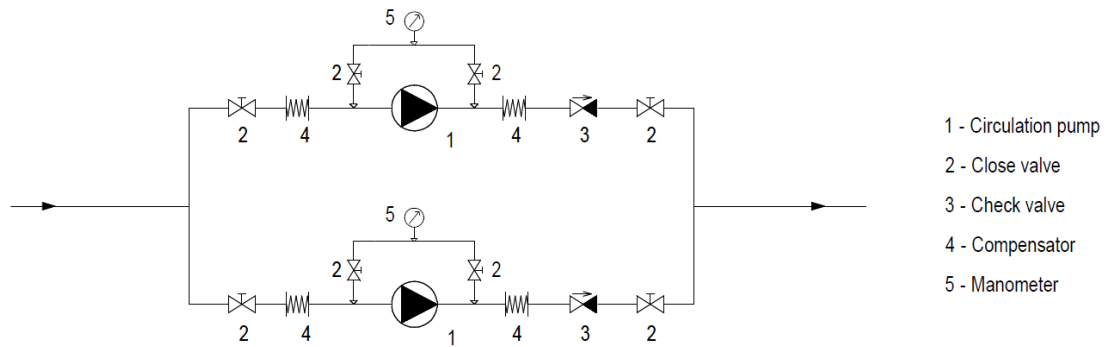
## Technical information:

### Double circulation pumps unit technical parameters:

Type	DP32	DP40	DP50	DP65	DP80	DP100	DP125	DP150	DP200	DP250	DP300
Pipe diameter	DN32	DN40	DN50	DN65	DN80	DN100	DN125	DN150	DN200	DN250	DN300
Max flow, m <sup>3</sup> /h	2	3	5.5	11	16	32	55	90	178	324	518
Max head, kPa	150	150	150	150	150	150	150	150	150	150	150

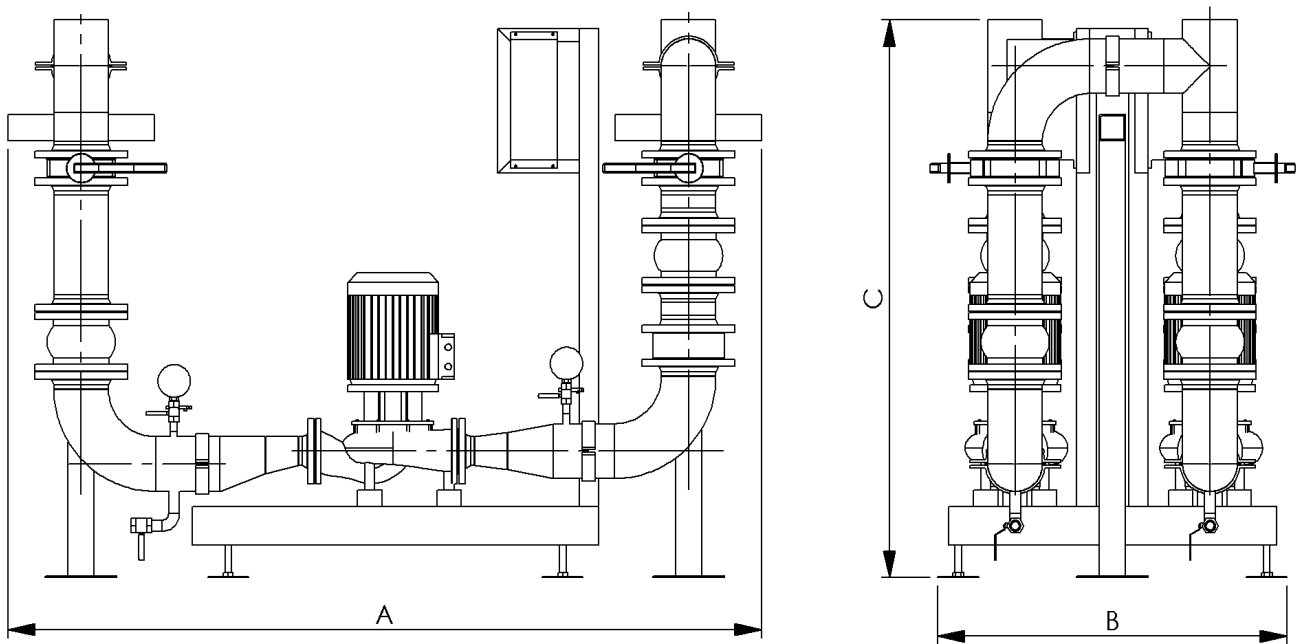
\* Flow parameters are given at medium water 60/35°C ( $\Delta T=25$ ). With other medium and  $\Delta T$  meanings maximum flow parameters may vary.

### Principal scheme and components:



\* Principal scheme shows components and operating principle of double circulation pumps unit.

### Double in-line version dimensions and weight:

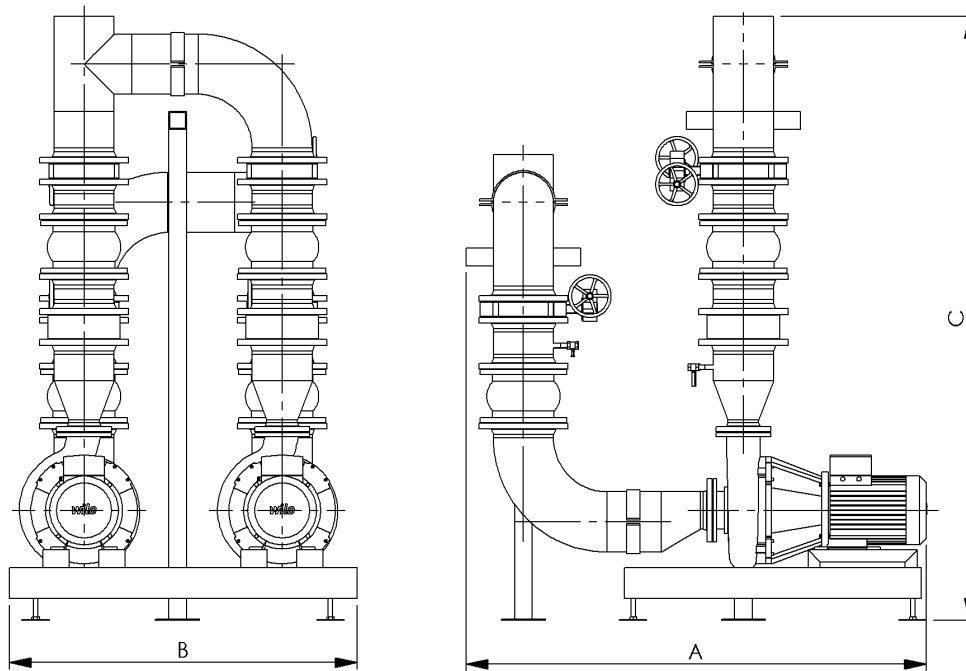


Dimension layouts of DP65 – DP300 in-line unit types

Type	DP32	DP40	DP50	DP65	DP80	DP100	DP125	DP150	DP200	DP250	DP300
A – Length mm	On request			1200	1500	1800	2100	2300	2700	3000	3300
B – Width mm	On request			850	900	1000	1100	1200	1400	1600	1700
C – Height mm	On request			1000	1200	1450	1700	1800	2000	2200	2400
Net weight, kg	On request			350	500	700	800	900	1400	1800	2100

\* Approximately dimensions and weight. Depending on the project requirements, pipe connections, type of pumps the dimensions may vary.

## Double angle version dimensions and weight:



Dimension layouts of DP65 – DP300 angle unit types

Type	DP32	DP40	DP50	DP65	DP80	DP100	DP125	DP150	DP200	DP250	DP300
A – Length mm	On request			950	1000	1200	1400	1600	1900	2100	2400
B – Width mm	On request			850	900	1000	1100	1200	1400	1600	1700
C – Height mm	On request			1300	1500	1800	2000	2300	2500	2750	2900
Net weight, kg	On request			300	400	600	700	900	1400	1700	2000

\* Approximately dimensions and weight. Depending on the project requirements, pipe connections, type of pumps the dimensions may vary.

## Available other design layouts:

FlowTek double circulation pumps unit is designed as standart product and is available in two different installation versions: with in-line circulation pumps and angle circulation pumps. Also pipe connections can be designed in horizontally or vertically way. Other design layouts can be ordered according to customer requirements. FlowTek circulation pumps unit connection points can be easily adapted to project parameters.

