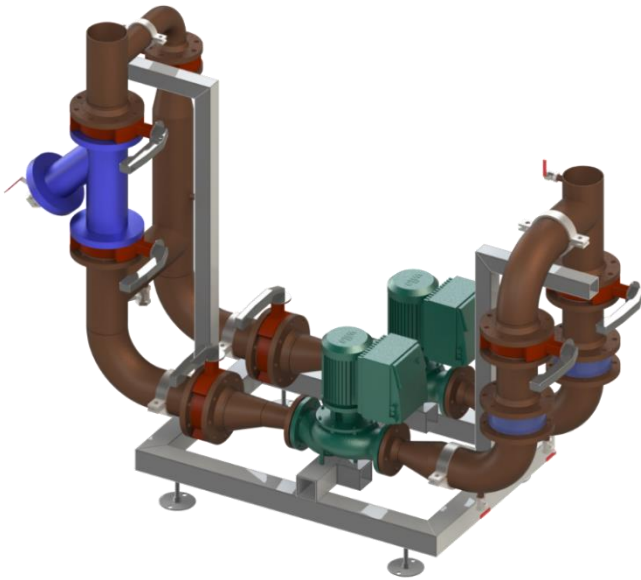


## FlowTek double circulation pumps & filter unit

Circulation pumps flow range 2 – 518 m<sup>3</sup>/h



Example of DPF65 – DPF300 unit types

### Benefits:

- Compact size for an easy installation and transport.
- Space and time savings during on-site installation.
- Completely mounted on frame with adjustable feet.
- Easy to install and maintain.
- Good access to maintenance components.
- Possibility to choose filter, pump model and range.
- Customization according to the project parameters, pipe sizes and mounting locations.

### Product information:

Prefabricated and ready-to-connect FlowTek double circulation pumps & filter unit can be easily adapted for heating or cooling systems. The standard and prefabricated unit can be chosen between 2 design versions: with in-line circulation pumps and with angle circulation pumps. Also customer can choose pipe materials according to project parameters: black steel P235TR1 usually for heating system and stainless steel AISI316 usually for cooling system. Prefabricated FlowTek circulation pumps with filter unit is designed to be floor mounted. All components are mounted on frame, that provides a robust design. Circulation pumps, filters, piping and all other piping components comes as one module, so it ensures space and time savings for on-site installation. Preftek uses high quality and world recognized components, that ensures high performance during operation time. FlowTek unit comes as standard with Grundfos (alt. Wilo) circulation pumps. Preftek offers standard range of FlowTek products however it can be easily adjusted according to the project parameters, such as circulation pumps flow and head rates, pipeline sizes and pipe mounting locations.

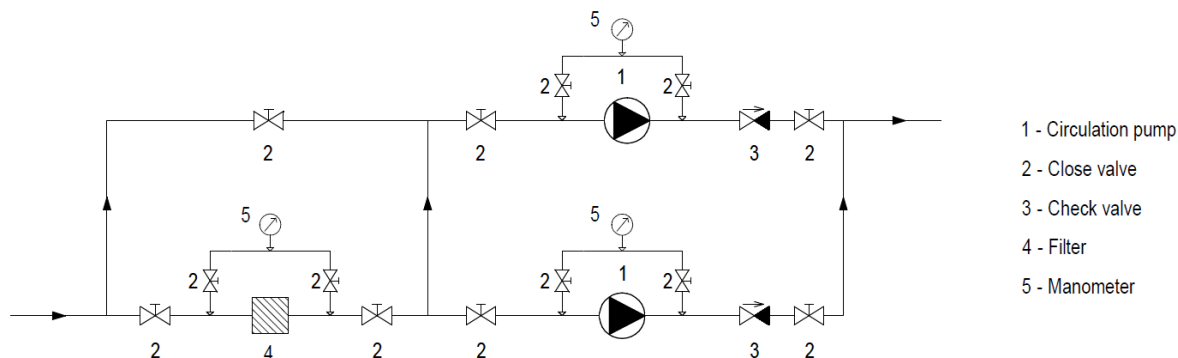
### Technical information:

Double circulation pumps with filter unit technical parameters:

Type	DPF32	DPF40	DPF50	DPF65	DPF80	DPF100	DPF125	DPF150	DPF200	DPF250	DPF300
Pipe diameter	DN32	DN40	DN50	DN65	DN80	DN100	DN125	DN150	DN200	DN250	DN300
Max flow, m <sup>3</sup> /h	2	3	5.5	11	16	32	55	90	178	324	518
Max head, kPa	150	150	150	150	150	150	150	150	150	150	150

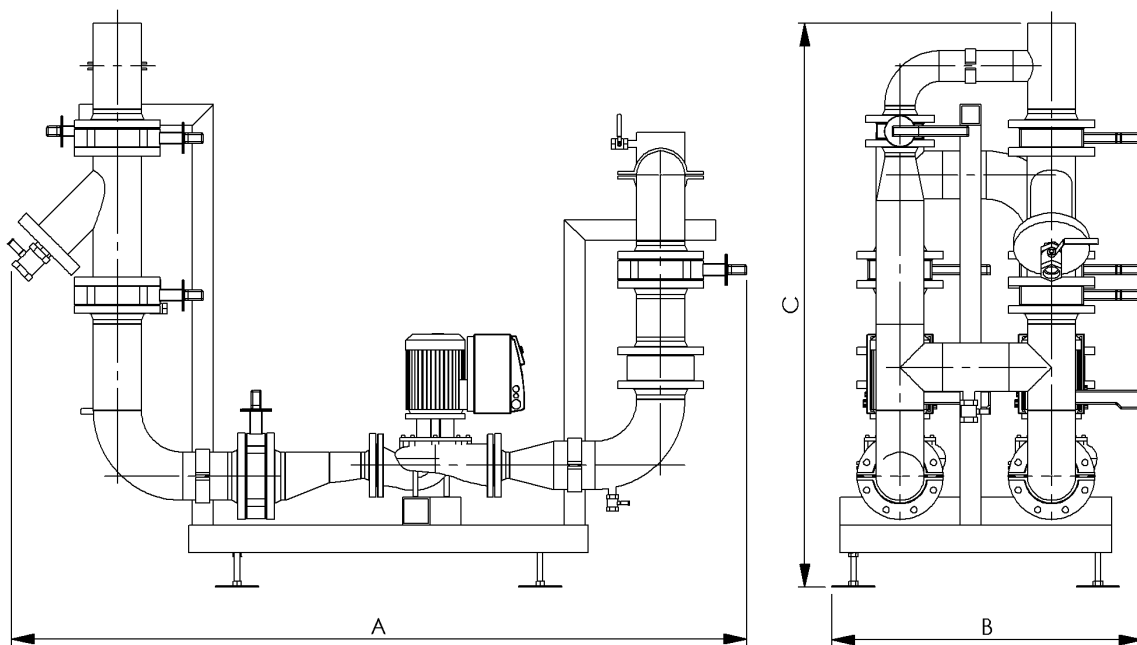
\* Flow parameters are given at medium water 60/35°C (ΔT=25). With other medium and ΔT meanings maximum flow parameters may vary.

Principal scheme and components:



Principal scheme shows components and operating principle of double circulation pumps with filter module.

Dimensions and weight:



Dimension layouts of DPF65 – DPF300 unit types

Type	DPF32	DPF40	DPF50	DPF65	DPF80	DPF100	DPF125	DPF150	DPF200	DPF250	DPF300
A – Length mm	On request			1250	1550	1900	2200	2400	2800	3100	3400
B – Width mm	On request			800	850	950	1000	1200	1300	1600	1700
C – Height mm	On request			1300	1500	1600	1700	1900	2100	2200	2400
Net Weight, kg	On request			400	500	700	800	1000	1450	1800	2100

\* Approx. dimensions. Depending on the project requirements, connections, type of pumps the dimensions may vary.

Available other design layout:

FlowTek double circulation pumps with filter unit is designed as standart product and is available in two different installation versions: with in-line circulation pumps and angle circulation pumps. Also pipe connections can be designed in horizontally or vertically way. Other design layouts can be ordered according to customer requirements.

