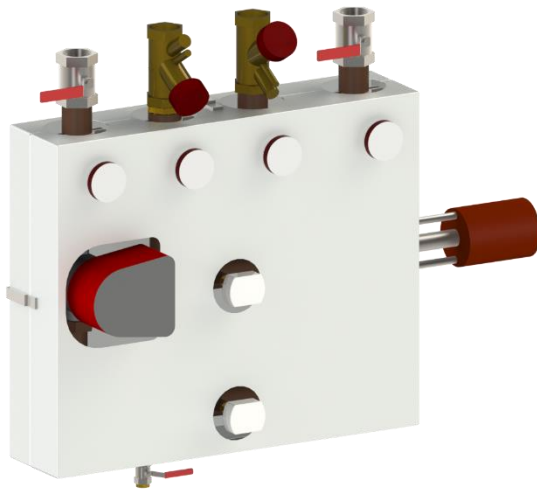
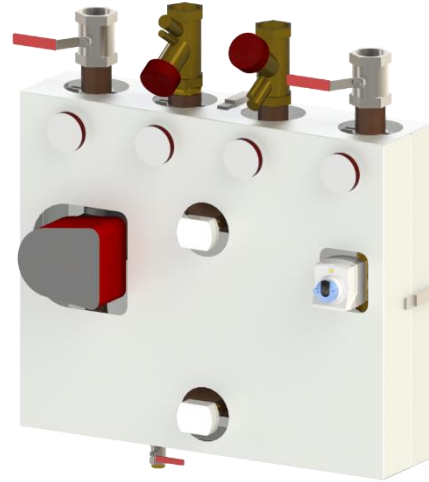


ShuntTek shunt group 15-65

Heating capacity 5,0 – 270 kW



Example of SH3W15-SH3W65 unit types



Example of SH2W15-SH2W65 unit types

Benefits:

- Compact size for an easy installation and transport.
- Space and time savings during on-site installation.
- Designed in case with mineral wool insulation.
- Easy to install and maintain.
- Complete with the pump, control valve and actuator.
- Possibility to choose pump model and actuator.
- Available in left-hand and right-hand versions.
- Other designs can be delivered as desired.

Product information:

Prefabricated and ready-to-connect ShuntTek shunt group for radiator, floor heating and ventilation systems. ShuntTek enables accurate temperature control of the medium coming from a high-temperature line to a heating network with lower temperature. Standard unit consists of fully welded black steel P235TR1 pipe materials. Prefabricated shunt group 15-65 is designed to be wall mounted with brackets. Shunt group is delivered with fire and corrosion-proof covered case of powder coated metal sheets including insulation of mineral wool inside. ShuntTek is equipped with high quality and world recognized components, that ensures high performance during operation time.

Technical information:

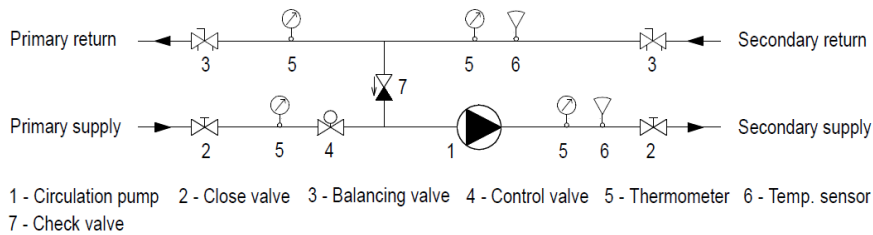
ShuntTek shunt group 15-65 technical parameters:

Type	SH2W15 SH3W15	SH2W20 SH3W20	SH2W25 SH3W25	SH2W32 SH3W32	SH2W40 SH3W40	SH2W50 SH3W50	SH2W65 SH3W65
Pipe diameter	DN15	DN20	DN25	DN32	DN40	DN50	DN65
Max flow, m ³ /h	0.25	0.5	1	2	3.5	6.5	12
Max head, kPa	55	55	55	55	60	60	60
Max capacity, kW	5	5-10	10-20	20-40	40-80	80-150	150-270

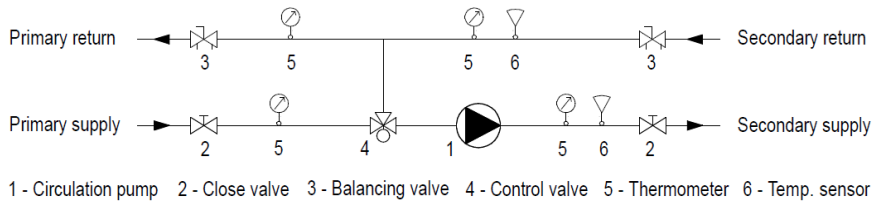
* Flow parameters are given at medium water and $\Delta T = 20^{\circ}\text{C}$. With other medium and ΔT meanings maximum flow parameters may vary.

Principal scheme and components:

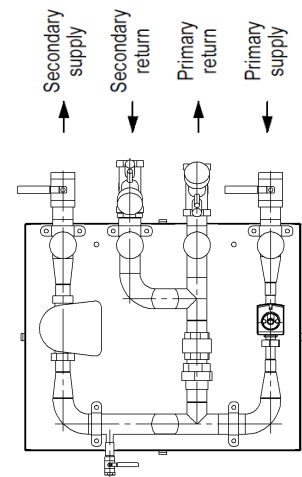
* Principal scheme shows components and operating principle of ShuntTek shunt group 15-65.



Principal scheme of SH2W15 – SH2W65 unit types

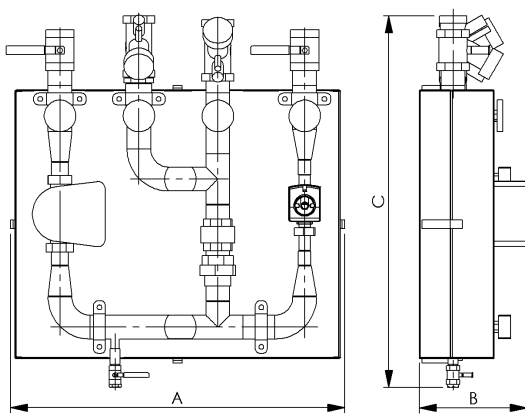


Principal scheme of SH3W15 – SH3W65 unit types

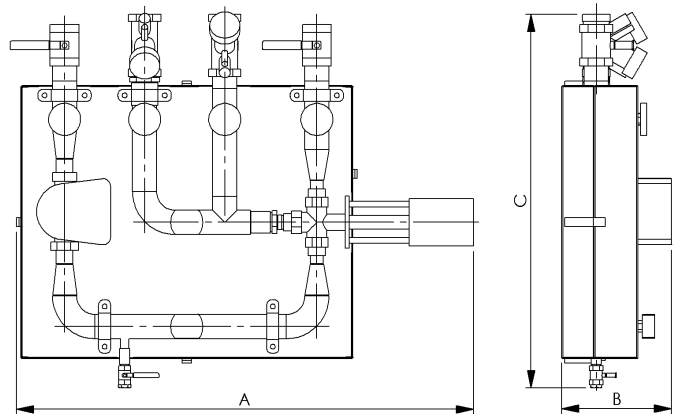


Connection points

Dimensions and weight:



Dimension layouts of SH2W15 – SH2W65 unit types



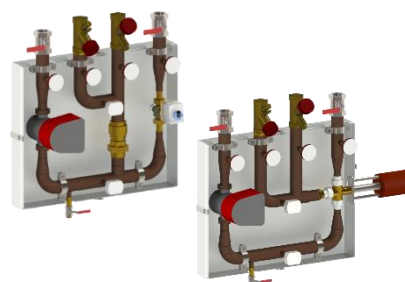
Dimension layouts of SH3W15 – SH3W65 unit types

Type	A-Length, mm	B - Width, mm	C- Height, mm	Net weight, kg	Type	A-Length, mm	B - Width, mm	C- Height, mm	Net weight, kg
SH2W15	820	400	950	50	SH3W15	1050	400	900	50
SH2W20	820	400	950	55	SH3W20	1080	400	950	55
SH2W25	820	400	950	60	SH3W25	1100	400	950	60
SH2W32	820	400	1000	65	SH3W32	1120	400	1000	65
SH2W40	850	400	1000	70	SH3W40	1150	400	1000	70
SH2W50	850	400	1000	75	SH3W50	1200	400	1000	75
SH2W65	900	450	1100	90	SH3W65	1250	450	1100	90

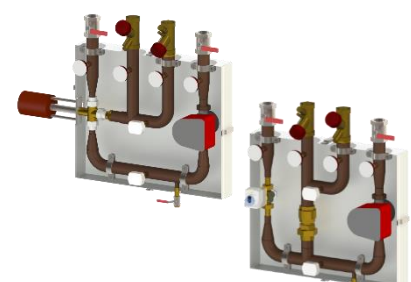
* Approx. dimensions. Depending on the customer requirements, connections, type of pumps the dimensions may vary.

Installation and connection versions:

ShuntTek is available in two different setups: left-hand and right-hand versions. Connections of primary and secondary sides are directly from above. Other design layouts can be ordered according to customer requirements. ShuntTek shunt group connection points can be easily adapted to project parameters.



Left-hand version



Right-hand version